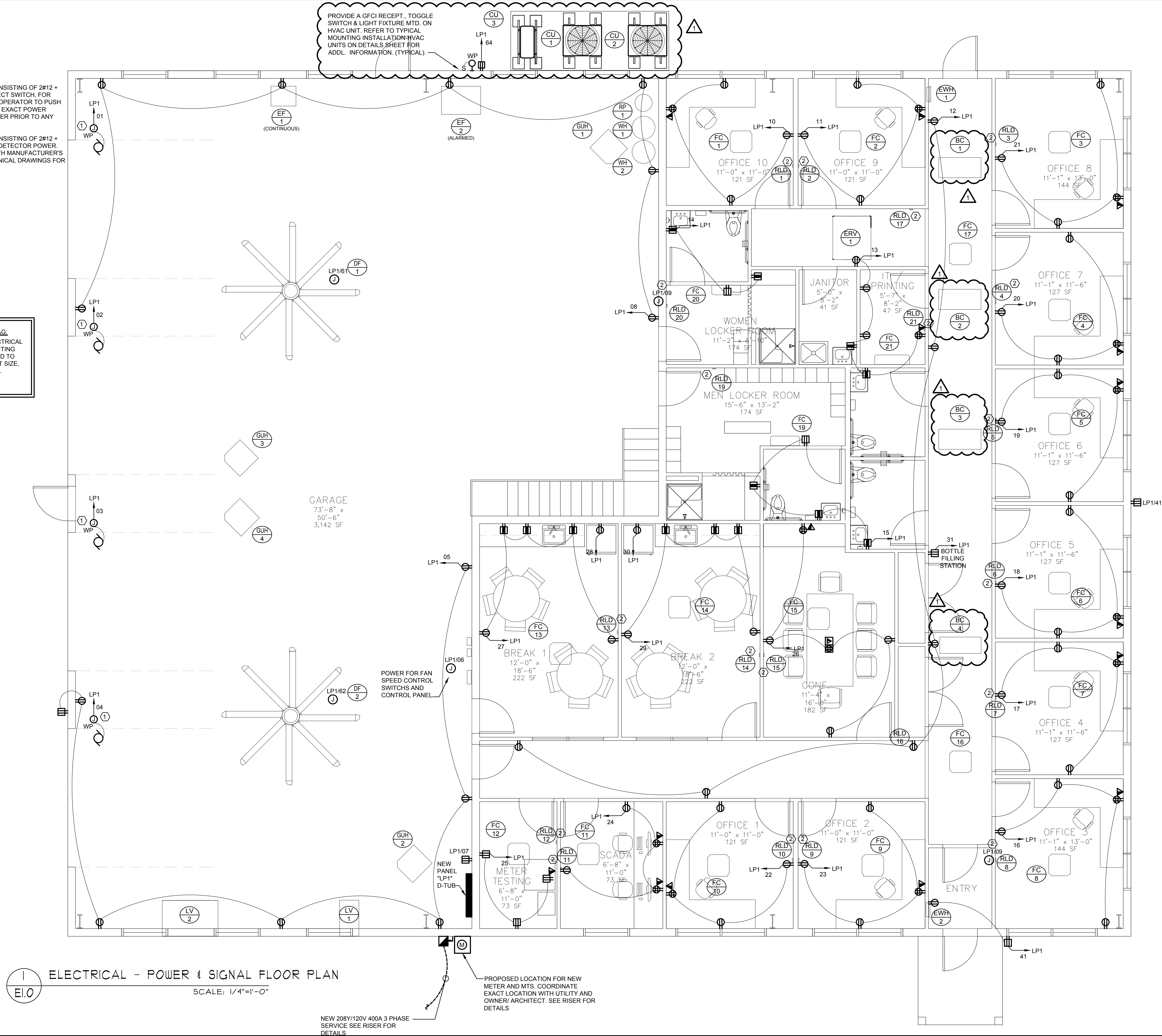


This drawing is copyrighted. Unauthorized use is prohibited.

SHEET NOTES:

- 1 PROVIDE 120 VOLT, 20 AMP CIRCUIT WITH WIRING CONSISTING OF 2#12 + 1#12 GND. IN 3/4" CONDUIT AND 30AF/3P/3R DISCONNECT SWITCH, FOR OVERHEAD DOOR POWER. PROVIDE CONDUIT FROM OPERATOR TO PUSH BUTTON FOR CONTROL. WIRES AS REQUIRED. VERIFY EXACT POWER REQUIREMENTS & CONNECTIONS WITH DOOR SUPPLIER PRIOR TO ANY WORK.
- 2 PROVIDE 120 VOLT, 20 AMP CIRCUIT WITH WIRING CONSISTING OF 2#12 + 1#12 GND. IN 3/4" CONDUIT. FOR REFRIGERANT LEAK DETECTOR POWER. VERIFY EXACT POWER REQUIREMENTS & WIRING WITH MANUFACTURER'S REPRESENTATIVE PRIOR TO ANY WORK. SEE MECHANICAL DRAWINGS FOR EXACT LOCATION.

MECHANICAL EQUIPMENT CONNECTION TAG:
REFER TO "MECHANICAL EQUIPMENT ELECTRICAL CONNECTION SCHEDULE" FOR ALL CIRCUITING INFORMATION, INCLUDING BUT NOT LIMITED TO BRANCH CIRCUITING WIRING AND CONDUIT SIZE, VOLTAGE, PHASE, MOTOR CONTROL, DISC. SWITCH & CIRCUIT BREAKER.



ISSUED FOR BIDDING

Ed Wojcik
a r c h i t e c t, l t d
One Richmond Square
Providence, RI 02906
401-861-7139
Fax: 401-861-7165

Proposed Design for:
Noonsocket
Water Division
New Garage and Offices
Roy Ave
Noonsocket, RI 02895

ENGINEERING DESIGN SERVICES
INCORPORATED
141 ROUTE 102, SUITE 100
PROVIDENCE, RI 02904
TEL: 401-762-5200 FAX: 401-762-5204

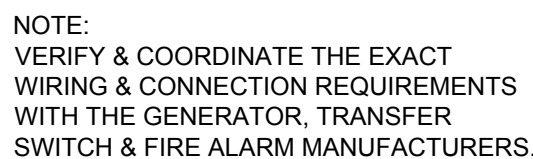
SHEET CONTENTS:

ELECTRICAL
POWER &
SIGNAL
FLOOR PLAN

PROJECT # 4222

DATE: 08/01/2023
REVISED DATE:
08/30/2023

E.I.O



ELECTRICAL ONE-LINE DIAGRAM
(NEW WORK)
NOT TO SCALE

MECHANICAL EQUIPMENT ELECTRICAL CONNECTION SCHEDULE																
XXX ## ITEM No.	DESCRIPTION	LOCATION	EQUIPMENT CHARACTERISTICS					CIRCUIT	CIRCUIT BREAKER (HACR TYPE)	FEEDER & CONDUIT	DISCONNECT SWITCH				MANUAL MOTOR CONTROLLER	REMARKS
			VOLTS	PH	FREQ.	KW/(HP)	FLA				SIZE	FUSE	POLES	NEMA		
FC-1	FAN COIL UNIT (INDOOR)	(SEE PLANS)	208	1	60	-	0.5	LP1/ 43,45	15/2P	2#12 + 1#12 GND. IN 3/4" CONDUIT	-	-	-	-	PROVIDE MOTOR RATED TOGGLE SWITCH WITH THERMAL OVERRIDES.	SEE BELOW
FC-2	FAN COIL UNIT (INDOOR)	(SEE PLANS)	208	1	60	-	0.5			2#12 + 1#12 GND. IN 3/4" CONDUIT	-	-	-	-	PROVIDE MOTOR RATED TOGGLE SWITCH WITH THERMAL OVERRIDES.	SEE BELOW
FC-3	FAN COIL UNIT (INDOOR)	(SEE PLANS)	208	1	60	-	0.5			2#12 + 1#12 GND. IN 3/4" CONDUIT	-	-	-	-	PROVIDE MOTOR RATED TOGGLE SWITCH WITH THERMAL OVERRIDES.	SEE BELOW
FC-4	FAN COIL UNIT (INDOOR)	(SEE PLANS)	208	1	60	-	0.5			2#12 + 1#12 GND. IN 3/4" CONDUIT	-	-	-	-	PROVIDE MOTOR RATED TOGGLE SWITCH WITH THERMAL OVERRIDES.	SEE BELOW
FC-5	FAN COIL UNIT (INDOOR)	(SEE PLANS)	208	1	60	-	0.5			2#12 + 1#12 GND. IN 3/4" CONDUIT	-	-	-	-	PROVIDE MOTOR RATED TOGGLE SWITCH WITH THERMAL OVERRIDES.	SEE BELOW
FC-6	FAN COIL UNIT (INDOOR)	(SEE PLANS)	208	1	60	-	0.5	LP1/ 69,71	15/2P	2#12 + 1#12 GND. IN 3/4" CONDUIT	-	-	-	-	PROVIDE MOTOR RATED TOGGLE SWITCH WITH THERMAL OVERRIDES.	SEE BELOW
FC-7	FAN COIL UNIT (INDOOR)	(SEE PLANS)	208	1	60	-	0.5			2#12 + 1#12 GND. IN 3/4" CONDUIT	-	-	-	-	PROVIDE MOTOR RATED TOGGLE SWITCH WITH THERMAL OVERRIDES.	SEE BELOW
FC-8	FAN COIL UNIT (INDOOR)	(SEE PLANS)	208	1	60	-	0.5			2#12 + 1#12 GND. IN 3/4" CONDUIT	-	-	-	-	PROVIDE MOTOR RATED TOGGLE SWITCH WITH THERMAL OVERRIDES.	SEE BELOW
FC-9	FAN COIL UNIT (INDOOR)	(SEE PLANS)	208	1	60	-	0.5			2#12 + 1#12 GND. IN 3/4" CONDUIT	-	-	-	-	PROVIDE MOTOR RATED TOGGLE SWITCH WITH THERMAL OVERRIDES.	SEE BELOW
FC-10	FAN COIL UNIT (INDOOR)	(SEE PLANS)	208	1	60	-	0.5			2#12 + 1#12 GND. IN 3/4" CONDUIT	-	-	-	-	PROVIDE MOTOR RATED TOGGLE SWITCH WITH THERMAL OVERRIDES.	SEE BELOW
FC-11	FAN COIL UNIT (INDOOR)	(SEE PLANS)	208	1	60	-	0.5	LP1/ 73,75	15/2P	2#12 + 1#12 GND. IN 3/4" CONDUIT	-	-	-	-	PROVIDE MOTOR RATED TOGGLE SWITCH WITH THERMAL OVERRIDES.	SEE BELOW
FC-12	FAN COIL UNIT (INDOOR)	(SEE PLANS)	208	1	60	-	0.5			2#12 + 1#12 GND. IN 3/4" CONDUIT	-	-	-	-	PROVIDE MOTOR RATED TOGGLE SWITCH WITH THERMAL OVERRIDES.	SEE BELOW
FC-13	FAN COIL UNIT (INDOOR)	(SEE PLANS)	208	1	60	-	0.5			2#12 + 1#12 GND. IN 3/4" CONDUIT	-	-	-	-	PROVIDE MOTOR RATED TOGGLE SWITCH WITH THERMAL OVERRIDES.	SEE BELOW
FC-14	FAN COIL UNIT (INDOOR)	(SEE PLANS)	208	1	60	-	0.5			2#12 + 1#12 GND. IN 3/4" CONDUIT	-	-	-	-	PROVIDE MOTOR RATED TOGGLE SWITCH WITH THERMAL OVERRIDES.	SEE BELOW
FC-15	FAN COIL UNIT (INDOOR)	(SEE PLANS)	208	1	60	-	0.5			2#12 + 1#12 GND. IN 3/4" CONDUIT	-	-	-	-	PROVIDE MOTOR RATED TOGGLE SWITCH WITH THERMAL OVERRIDES.	SEE BELOW
FC-16	FAN COIL UNIT (INDOOR)	(SEE PLANS)	208	1	60	-	0.5	LP1/ 77,79	15/2P	2#12 + 1#12 GND. IN 3/4" CONDUIT	-	-	-	-	PROVIDE MOTOR RATED TOGGLE SWITCH WITH THERMAL OVERRIDES.	SEE BELOW
FC-17	FAN COIL UNIT (INDOOR)	(SEE PLANS)	208	1	60	-	0.5			2#12 + 1#12 GND. IN 3/4" CONDUIT	-	-	-	-	PROVIDE MOTOR RATED TOGGLE SWITCH WITH THERMAL OVERRIDES.	SEE BELOW
FC-18	FAN COIL UNIT (INDOOR)	(SEE PLANS)	208	1	60	-	0.5			2#12 + 1#12 GND. IN 3/4" CONDUIT	-	-	-	-	PROVIDE MOTOR RATED TOGGLE SWITCH WITH THERMAL OVERRIDES.	SEE BELOW
FC-19	FAN COIL UNIT (INDOOR)	(SEE PLANS)	208	1	60	-	0.21			2#12 + 1#12 GND. IN 3/4" CONDUIT	-	-	-	-	PROVIDE MOTOR RATED TOGGLE SWITCH WITH THERMAL OVERRIDES.	SEE BELOW
FC-20	FAN COIL UNIT (INDOOR)	(SEE PLANS)	208	1	60	-	0.21			2#12 + 1#12 GND. IN 3/4" CONDUIT	-	-	-	-	PROVIDE MOTOR RATED TOGGLE SWITCH WITH THERMAL OVERRIDES.	SEE BELOW
RLD-#	REFRIGERANT LEAK DETECTION	(SEE PLANS)	120	1	60	-	-			2#12 + 1#12 GND. IN 3/4" CONDUIT	-	-	-	-	REFER TO FLOOR PLANS FOR LOCATIONS AND EXACT QUANTITIES OF DETECTORS.	
CU-1	HEAT PUMP (OUTDOOR)	(SEE PLANS)	208	1	60	-	47.0	LP1/44,46	50A/2P	2#6 + 1#10 GND. IN 1" CONDUIT	60	50	3	3R	PROVIDE "WP" DISCONNECT SWITCH WITH FUSING AS INDICATED.	SEE BELOW
CU-2	HEAT PUMP (OUTDOOR)	(SEE PLANS)	208	1	60	-	47.0	LP1/68,70	50A/2P	2#6 + 1#10 GND. IN 1" CONDUIT	60	50	3	3R	PROVIDE "WP" DISCONNECT SWITCH WITH FUSING AS INDICATED.	SEE BELOW
ERV-1	ENERGY RECOVERY UNIT	(SEE PLANS)	208	1	60	-	5.2	LP1/47,49	15A/2P	2#12 + 1#12 GND. IN 3/4" CONDUIT	-	-	-	-	PROVIDE MOTOR RATED TOGGLE SWITCH WITH THERMAL OVERRIDES.	SEE BELOW
BC-1	BRANCH CONTROLLER	(SEE PLANS)	208	1	60	-	1.0	LP1/50,52	15A/2P	2#12 + 1#12 GND. IN 3/4" CONDUIT	-	-	-	-	PROVIDE MOTOR RATED TOGGLE SWITCH WITH THERMAL OVERRIDES.	SEE BELOW
BC-2	BRANCH CONTROLLER	(SEE PLANS)	208	1	60	-	1.0			2#12 + 1#12 GND. IN 3/4" CONDUIT	-	-	-	-	PROVIDE MOTOR RATED TOGGLE SWITCH WITH THERMAL OVERRIDES.	SEE BELOW
BC-3	BRANCH CONTROLLER	(SEE PLANS)	208	1	60	-	1.0			2#12 + 1#12 GND. IN 3/4" CONDUIT	-	-	-	-	PROVIDE MOTOR RATED TOGGLE SWITCH WITH THERMAL OVERRIDES.	SEE BELOW
BC-4	BRANCH CONTROLLER	(SEE PLANS)	208	1	60	-	1.0			2#12 + 1#12 GND. IN 3/4" CONDUIT	-	-	-	-	PROVIDE MOTOR RATED TOGGLE SWITCH WITH THERMAL OVERRIDES.	SEE BELOW
FC-21	FAN COIL UNIT (INDOOR)	(SEE PLANS)	208	1	60	-	1.0	LP1/51,53	15A/2P	2#12 + 1#12 GND. IN 3/4" CONDUIT	-	-	-	-	PROVIDE MOTOR RATED TOGGLE SWITCH WITH THERMAL OVERRIDES.	SEE BELOW
CU-3	HEAT PUMP (OUTDOOR)	(SEE PLANS)	208	1	60	-	15.0			2#12 + 1#12 GND. IN 3/4" CONDUIT	30	15	2	3R	PROVIDE "WP" DISCONNECT SWITCH WITH FUSING AS INDICATED.	SEE BELOW
EWH-1	ELECTRIC WALL HEATER	(SEE PLANS)	208	1	60	(2.0)	10.0	LP1/54,56	15A/2P	2#12 + 1#12 GND. IN 3/4" CONDUIT	-	-	-	-	PROVIDE MOTOR RATED TOGGLE SWITCH WITH THERMAL OVERRIDES.	SEE BELOW
EWH-2	ELECTRIC WALL HEATER	(SEE PLANS)	120	1	60	(1.5)	12.9	LP1/55	20A/1P	2#12 + 1#12 GND. IN 3/4" CONDUIT	-	-	-	-	PROVIDE MOTOR RATED TOGGLE SWITCH WITH THERMAL OVERRIDES.	SEE BELOW
GUH-1	GAS UNIT HEATER	(SEE PLANS)	120	1	60	0.6	2.4	LP1/57	15A/1P	2#12 + 1#12 GND. IN 3/4" CONDUIT	-	-	-	-	PROVIDE MOTOR RATED TOGGLE SWITCH WITH THERMAL OVERRIDES.	SEE BELOW
GUH-2	GAS UNIT HEATER	(SEE PLANS)	120	1	60	0.6	2.4			2#12 + 1#12 GND. IN 3/4" CONDUIT	-	-	-	-	PROVIDE MOTOR RATED TOGGLE SWITCH WITH THERMAL OVERRIDES.	SEE BELOW
GUH-3	GAS UNIT HEATER	(SEE PLANS)	120	1	60	0.6	2.4	LP1/58	15A/1P	2#12 + 1#12 GND. IN 3/4" CONDUIT	-	-	-	-	PROVIDE MOTOR RATED TOGGLE SWITCH WITH THERMAL OVERRIDES.	SEE BELOW
GUH-4	GAS UNIT HEATER	(SEE PLANS)	120	1	60	0.6	2.4			2#12 + 1#12 GND. IN 3/4" CONDUIT	-	-	-	-	PROVIDE MOTOR RATED TOGGLE SWITCH WITH THERMAL OVERRIDES.	SEE BELOW
EF-1	EXHAUST FAN	(SEE PLANS)	120	1	60	1/4	5.8	LP1/59	20A/1P	2#12 + 1#12 GND. IN 3/4" CONDUIT	-	-	-	-	PROVIDE MOTOR RATED TOGGLE SWITCH WITH THERMAL OVERRIDES.	SEE BELOW
EF-2	EXHAUST FAN	(SEE PLANS)	120	1	60	3/4	13.8	LP1/60	20A/1P	2#12 + 1#12 GND. IN 3/4" CONDUIT	-	-	-	-	PROVIDE MOTOR RATED TOGGLE SWITCH WITH THERMAL OVERRIDES.	SEE BELOW
DF-1	DESTRAT. FAN	(SEE PLANS)	120	1	60	3/4	13.8	LP1/61	20A/1P	2#12 + 1#12 GND. IN 3/4" CONDUIT	-	-	-	-	PROVIDE MOTOR RATED TOGGLE SWITCH WITH THERMAL OVERRIDES.	SEE BELOW
DF-2	DESTRAT. FAN	(SEE PLANS)	120	1	60	3/4	13.8	LP1/62	20A/1P	2#12 + 1#12 GND. IN 3/4" CONDUIT	-	-	-	-	PROVIDE MOTOR RATED TOGGLE SWITCH WITH THERMAL OVERRIDES.	SEE BELOW
M-1	MOTORIZED DAMPERS	(SEE PLANS)	120	1	60	3/4	13.8	LP1/63	20A/1P	2#12 + 1#12 GND. IN 3/4" CONDUIT	-	-	-	-	PROVIDE MOTOR RATED TOGGLE SWITCH WITH THERMAL OVERRIDES.	SEE BELOW
WH-1	ELECTRIC WATER HEATER	(SEE PLANS)	208	1	60	-	30.0	LP1 / 65,67	30A/2P	3#10 + 1#10 GND. IN 3/4" CONDUIT.	30	30	2	3R	PROVIDE "WP" DISCONNECT SWITCH WITH FUSING AS INDICATED.	SEE BELOW
WH-2	ELECTRIC WATER HEATER	(SEE PLANS)	120	1	60	-	-	LP1/66	20A/1P	2#12 + 1#12 GND. IN 3/4" CONDUIT	-	-	-	-	PROVIDE MOTOR RATED TOGGLE SWITCH WITH THERMAL OVERRIDES.	SEE BELOW
RC-1	RECIRC. PUMP	(SEE PLANS)	120	1	60	-	-			2#12 + 1#12 GND. IN 3/4" CONDUIT	-	-	-	-	PROVIDE MOTOR RATED TOGGLE SWITCH WITH THERMAL OVERRIDES.	SEE BELOW
NOTES: 1. COORDINATE WITH HVAC CONTRACTOR & DRAWINGS FOR EXACT LOCATIONS OF ALL MECHANICAL EQUIPMENT PRIOR TO INSTALLING ELECTRICAL COMPONENTS. 2. COORDINATE WITH PLUMBING CONTRACTOR & DRAWINGS FOR EXACT LOCATIONS OF ALL PLUMBING EQUIPMENT PRIOR TO INSTALLING ELECTRICAL COMPONENTS. 3. ALL DISCONNECTING MEANS SHALL BE SUPPLIED AND INSTALLED BY THE ELECTRICAL CONTRACTOR. 4. ALL STARTERS, VFD'S ETC. SHALL BE SUPPLIED AND INSTALLED BY THE MECHANICAL CONTRACTOR. ELECTRICAL CONTRACTOR SHALL WIRE ALL HVAC EQUIPMENT. 5. ALL HVAC CONTROL WIRING SHALL BE PROVIDED BY OTHERS.																



ISSUED FOR BIDDING

Ed Wojcik

architect, ltd

One Richmond Square
Providence, RI 02906
401-861-7139
Fax: 401-861-7165

Proposed Design for:
Noonsocket
Water Division
New Garage and Offices
Roy Ave
Noonsocket, RI 02895

ENGINEERING DESIGN SERVICES
INCORPORATED

141 ROUTE 152 SOUTH
PROVIDENCE, RI 02904
(401) 752-5200 • FAX (401) 752-2904

SHEET CONTENTS:

ELECTRICAL
SCHEDULES &
DETAILS

PROJECT # 4222

DATE: 08/07/2023
REVISED DATE:
08/30/2023

E2.1

LIGHTING FIXTURE SCHEDULE								
TYPE	MANUFACTURER	CATALOG No.	MOUNTING	LAMPING			VOLTAGE	DESCRIPTION / REMARKS
				TYPE	WATTAGE	QUANTITY		
A	LITHONIA LIGHTING	2VTL2 40L ADPT EZ1 LP80	RECESSED	LED	20/28/39	1	120	2X2 RECESSED LED PANEL
B	LITHONIA LIGHTING	CPHN 24LM MVOLT 50K	HUNG	LED	174	1	120	HIGH BAY LED FIXTURE
C	LITHONIA LIGHTING	LDN6-AL02-SWW1-MVOLT-UGZ-HSG	RECESSED	LED	19	1	120	6" RECESSED DOWN LIGHT, SUITABLE FOR WET LOCATIONS.
D	LITHONIA LIGHTING	WDGE LED P2 35K 80CRI MVOLT	WALL	LED	4	1	120	EXTERIOR 9" WALL MOUNT LED FIXTURE
E	LITHONIA LIGHTING	WDGE3 LED P2 40K 80CRI MVOLT	WALL	LED	4	1	120	EXTERIOR 18" WALL MOUNT LED FIXTURE
F	LITHONIA LIGHTING	W 2 17 MVOLT LP835	WALL	LED	4	1	120	24" WALL MOUNT LED FIXTURE
G	NUTONE LIGHTING	MODEL 763N	RECESSED	LED	1.6	1	120	RECESSED VENTILATION FAN WITH LIGHT, SUITABLE FOR WET LOCATIONS.
NOTES: 1. PROVIDE ACCESSORIES AND MOUNTING HARDWARE AS REQUIRED FOR ALL FIXTURES. 2. ALL FIXTURE/ACCESSORY COLORS NOT INDICATED ON DRAWING'S SHALL BE SELECTED BY ARCHITECT. 3. PROVIDE LAMPING FOR ALL FIXTURES UNLESS LAMPING IS INCLUDED WITH FIXTURE AS INDICATED IN SCHEDULE. 4. PROVIDE TYPICAL UNIT MOCK UP FOR LIGHT FIXTURE HANGING HEIGHTS AND EXPOSED ELECTRICAL CONDUIT LAYOUT TO BE REVIEWED BY ARCHITECT. 5. FIXTURE TO BE WIRED TO PHOTO CELL AND TIME CLOCK PROVIDED BY G.C. 6. ALL LIGHT FIXTURES WITH INCANDESCENT LAMPING SHALL BE PROVIDED W/ CFL/LED LAMP IN LIEU OF INCANDESCENT LAMP. 7. THE ELECTRICAL CONTRACTOR SHALL VERIFY COLOR & FINISH WITH ARCHITECT PRIOR TO SUBMITTAL OF SHOP DRAWINGS. 8. CC = CUSTOM COLOR TO BE SELECTED BY ARCHITECT (THE ELECTRICAL CONTRACTOR SHALL VERIFY CUSTOM COLOR & FINISH WITH ARCHITECT PRIOR TO SUBMITTAL OF SHOP DRAWINGS.							MANUFACTURER CONTACT: BOSTON LIGHT SOURCE LIZ McDONOUGH1-617-788-2400 EMAIL: LMCDONOUGH@bostonlightsource.com	

PANELBOARD SCHEDULE "LP1" (1 of 2)													
MAIN: 400A (Fully Rated)							VOLTAGE: 120/208						
BUSSING: 400A							AIC RATING: 65k						
DESCRIPTION	LOAD			breaker	NO.			breaker	LOAD			DESCRIPTION	
	⚡A	⚡B			1	A	2		20/1	⚡A	⚡B		
OVERHEAD DOOR 1	1.00			20/1	1	A	2	20/1	1.00			OVERHEAD DOOR 2	
OVERHEAD DOOR 3		1.00		20/1	3	B	4	20/1		1.00		OVERHEAD DOOR 4	
GARAGE REC.	1.20			20/1	5	A	6	20/1	1.00			FAN SPEED CONTROL	
ELECTRIC GFI		0.20		20/1	7	B	8	20/1		1.40		GARAGE REC. 2	
RLD.	0.40			20/1	9	A	10	20/1	1.00			OFFICE 10 REC.	
OFFICE 9 REC.		1.00		20/1	11	B	12	20/1		1.20		CORRIDOR REC.	
IT PRINT REC.	1.20			20/1	13	A	14	20/1	0.60			WOMAN LOCKER REC.	
MEN LOCKER REC.		0.80		20/1	15	B	16	20/1		1.00		OFFICE 3 REC.	
OFFICE 4 REC.	1.00			20/1	17	A	18	20/1	1.00			OFFICE 5 REC.	
OFFICE 6 REC.		1.00		20/1	19	B	20	20/1		1.00		OFFICE 7 REC.	
OFFICE 8 REC.	1.00			20/1	21	A	22	20/1	1.00			OFFICE 1 REC.	
OFFICE 2 REC.		1.00		20/1	23	B	24	20/1		1.20		SCADA REC.	
METER TEST. REC.	0.60			20/1	25	A	26	20/1	1.40			CONF. REC	
BREAK 1 REC.		1.00		20/1	27	B	28	20/1		0.20		FRIDGE 1.	
BREAK 2 REC.	1.00			20/1	29	A	30	20/1	0.20			FRIDE 2.	
BOTTLE FILLING REC.		0.20		20/1	31	B	32	20/1		-		(SPARE BRKR.)	
(SPARE BRKR.)	-			20/1	33	A	34	20/1	-			(SPARE BRKR.)	
EXTERIOR LIGHTING		1.00		20/1	35	B	36	20/1		1.00		FC-	
LIGHTS 2	1.60			20/1	37	A	38	20/1	0.60			Mezz Lights	
Mezz. 1 Rec.		1.00		20/1	39	B	40	20/1		0.80		Mezz. 2 Rec.	
(SPARE BRKR.)	-			20/1	41	A	42	20/1	-			(SPARE BRKR.)	
9.00		8.20	← TOTAL/PHASE →						7.80	8.80			
TOTAL (KVA): 33.80													
TOTAL AMP: 162.50													

PANELBOARD SCHEDULE "LP1" (2 of 2)													
MAIN: (Double-Tub)							VOLTAGE: 120/208						
BUSSING: 400A							AIC RATING: 65k						
DESCRIPTION	LOAD		breaker	NO.	A	NO.	breaker	LOAD		DESCRIPTION			
	ⓂA	ⓂB						ⓂA	ⓂB				
FC1 - FC5	0.26		15/2	43	A	44	50/2	4.88		CU-1			
		0.26		45	B	46			4.88				
ERV-1	0.52		15/2	47	A	48	20/1	-		(SPARE BRKR.)			
		0.52		49	B	50			0.42				
FC-21/CU-3	1.56		15/2	51	A	52	15/2	0.42		BC-1/2/3/4			
		1.56		53	B	54			1.00				
EW-2	1.50		20/1	55	A	56		1.00		EWH-1			
GUH-1/GUH-2		0.60	15/1	57	B	58	15/1	0.60					
EF-1	0.70		20/1	59	A	60	20/1	1.70		EF-2			
DF-1		1.70	20/1	61	B	62	20/1		1.70	DF-2			
M-1	0.10		20/1	63	A	64	20/1	0.20		HVAC RECEPT.			
WH-1		1.95	30/2	65	B	66	20/1		0.20	WH-1 / RC-1			
		1.95		67	A	68		4.88					
FC-6 - FC-10		0.26	15/2	69	B	70	50/2		4.88	CU-2			
	0.26			71	A	72		20/1	-				
FC-11 - FC-16		0.32	15/2	73	B	74	20/1		-	(SPARE BRKR.)			
	0.32			75	A	76	20/1	-	(SPARE BRKR.)				
FC-17 - 20		0.26	15/2	77	B	78	20/1		-	(SPARE BRKR.)			
	0.26			79	A	80	20/1	-	(SPARE BRKR.)				
(SPARE BRKR.)		-	20/1	81	B	82	20/1		-	(SPARE BRKR.)			
(SPARE BRKR.)	-		20/1	83	A	84	20/1	-		(SPARE BRKR.)			
7.43		7.43	← TOTAL/PHASE →					13.08	13.68				
TOTAL (KVA): 41.62													
TOTAL AMP: 200.10													

ISSUED FOR BIDDING

Ed Wojcik
a r c h i t e c t, l t d
One Richmond Square
Providence, RI 02906
401-861-7139
Fax: 401-861-7165

Proposed Design for:
Noonsocket
Water Division
New Garage and Offices
Roy Ave
Noonsocket, RI 02895

ENGINEERING DESIGN SERVICES
INCORPORATED
141 ROUTE 152, SUITE 100
PROVIDENCE, RI 02904
TEL: 401.755.5200 FAX: 401.755.2904

SHEET CONTENTS:

ELECTRICAL
SCHEDULES &
DETAILS

PROJECT # 4222

DATE: 08/01/2023
REVISED DATE:
08/30/2023

E2.2