

**CITY OF WOONSOCKET
WATER METERS AND FIXED NETWORK AMI SYSTEM
BID #6182**

ADDENDUM 3

TO ALL CONTRACTORS ESTIMATING:

Bidders are hereby informed that plans and specifications for the above-mentioned contract are modified, corrected, and/or supplemented as follows and **Addendum No. 3** becomes part of the Contract Documents and consists of Items **1 through 3**.

SPECIFICATIONS

- 1) Figure entitled “Distribution System Woonsocket RI” page 262 of 268 in the Project Manual.
 - a) The Woonsocket Water Division will be moving their offices from the old water treatment plant (Charles G. Hammann W.T.P.) to a temporary location at 181 Cumberland St in January 2024. Approximately a year later, they will move to a permanent location in a new building (currently under design) at 121 Roy Avenue. Once moved to 121 Roy Avenue, the building at 181 Cumberland Street may be sold and may no longer be available for use as part of the network. As such, the system shall be designed to function during the interim condition (with the office at 181 Cumberland) and during the permanent condition (with the office at 121 Roy Avenue and the removal of equipment at 181 Cumberland Street). The locations are shown on the revised Figure noted below.
 - b) **DELETE** Figure entitled “Distribution System Woonsocket RI” in its entirety and **REPLACE** with a new Figure entitled “Distribution System Woonsocket RI Addendum 3” provided in Attachment A.

QUESTIONS

- 2) Q1: We requesting clarification with respect to the liquidated damages clause. Does this apply to a supply contract? If so, how?

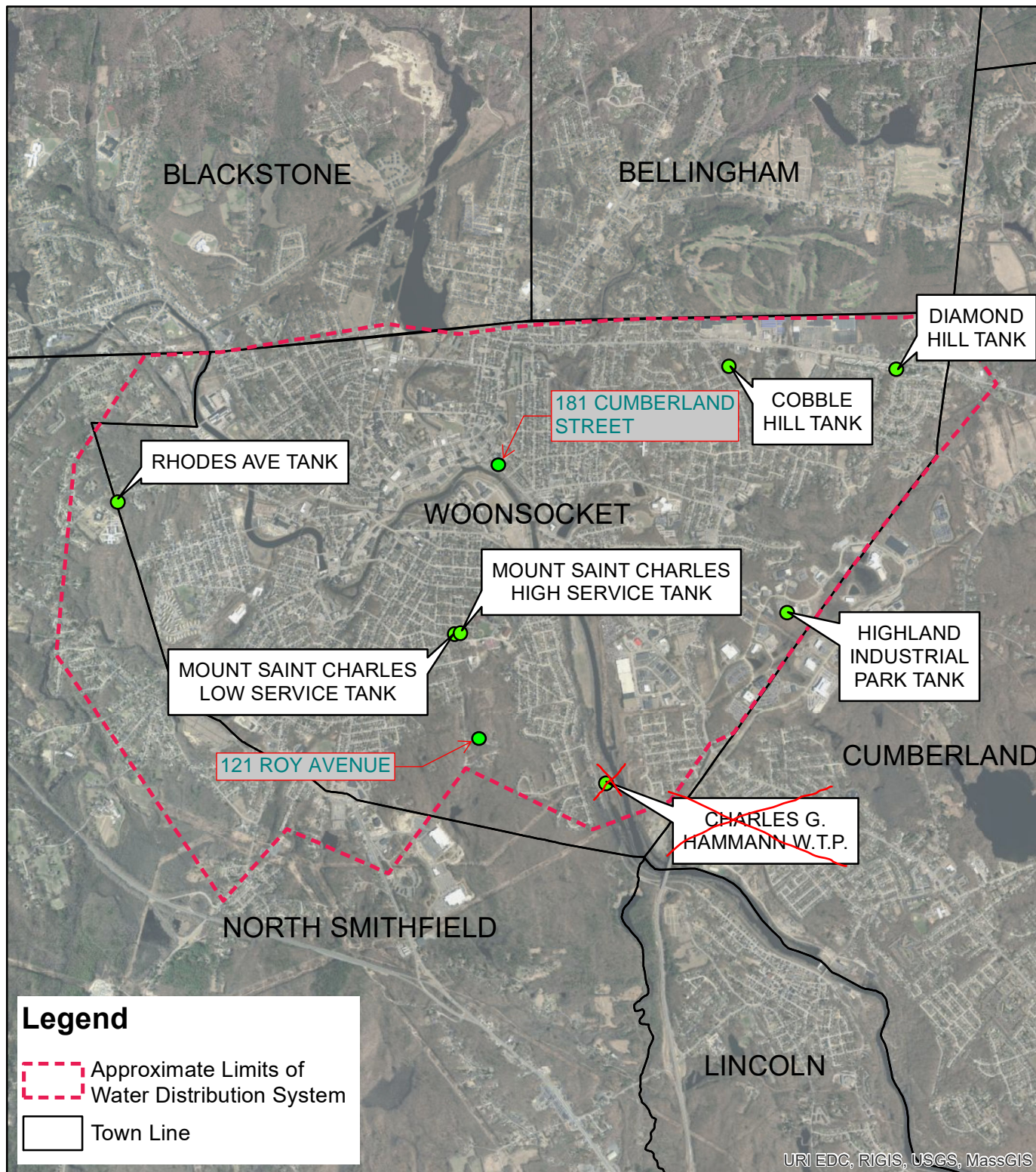
A1: Yes. The project includes furnishing the meters, but also includes furnishing and installing the Network.

- 3) Q2: Will the city consider mounting the endpoint to the exterior of the home or building? This ensures easy access and service ability for the lifetime of the AMI module. It also will help reduce the potential of tampering and will also maximize the network signal strength and read rate reliability.

A2: Yes

END OF ADDENDUM NO. 3

ATTACHMENT A



Legend

Approximate Limits of Water Distribution System

Town Line



LOCATION MAP

SCALE: 1"=3,750'



8 BLACKSTONE VALLEY PLACE
LINCOLN, RI 02865
(401) 334-4100

10 LINCOLN ROAD, SUITE 210
FOXBORO, MA 02035
(508) 543-1755

PARE PROJECT No. 15028.01

FEBRUARY 2018

DISTRIBUTION SYSTEM

WOONSOCKET, RI

ADDENDUM 3 - NOVEMBER 30, 2023