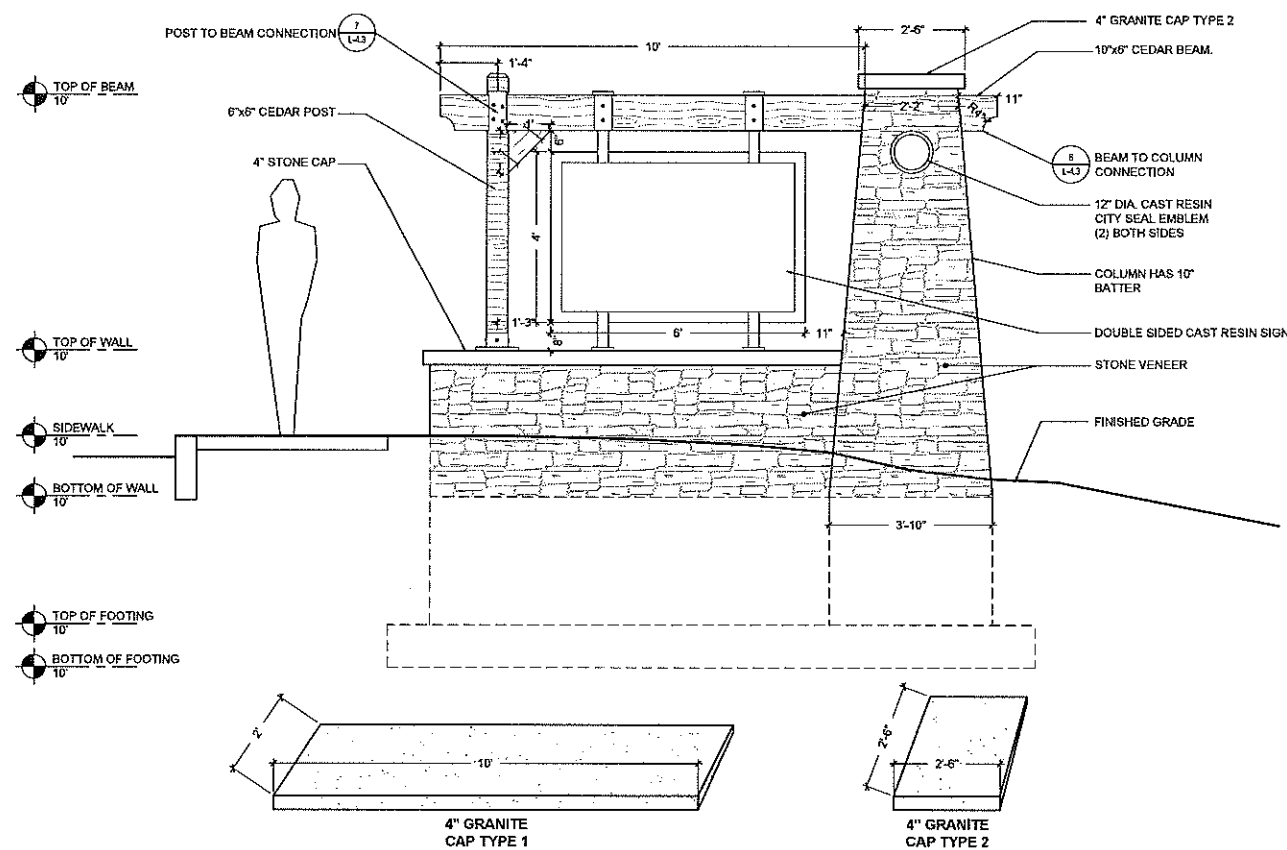
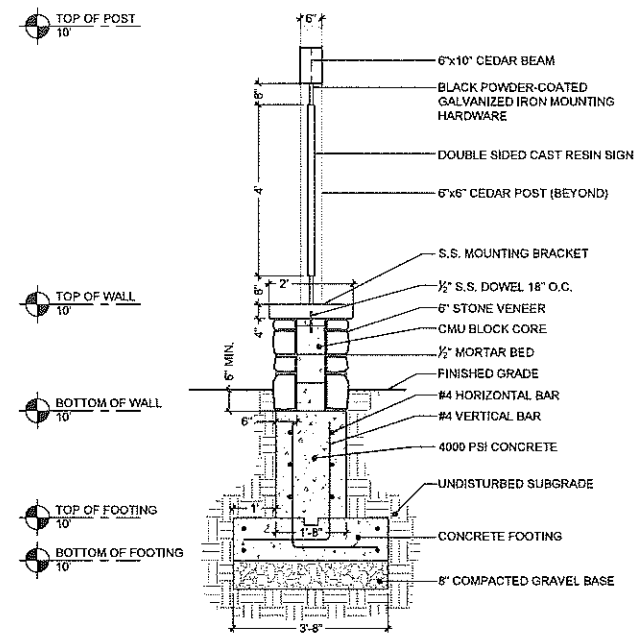


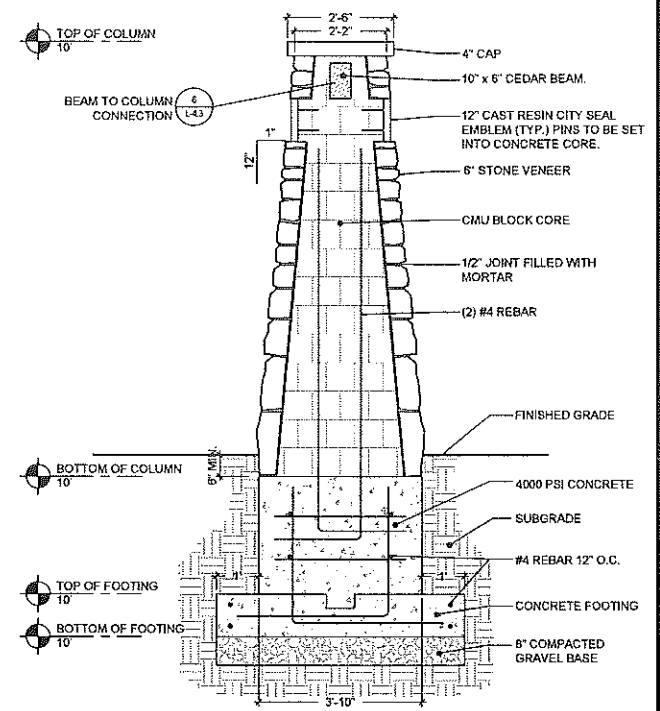
1 MAIN ENTRY SIGN: PLAN VIEW
SCALE: 1/2"=1'



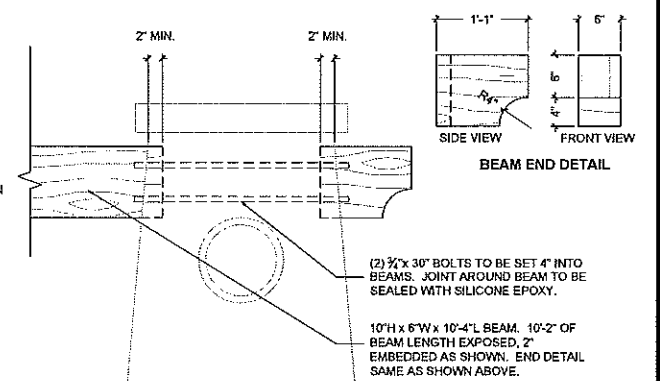
2 MAIN ENTRY SIGN: ELEVATION
SCALE: 1/2"=1'



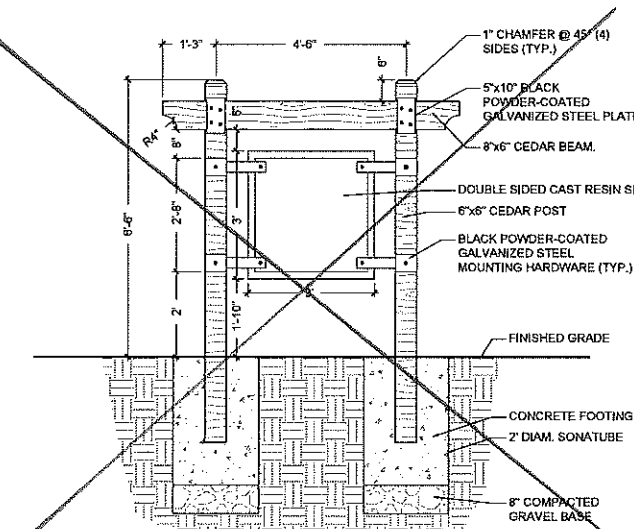
3 MAIN ENTRY SIGN: SECTION
SCALE: 1/2"=1'



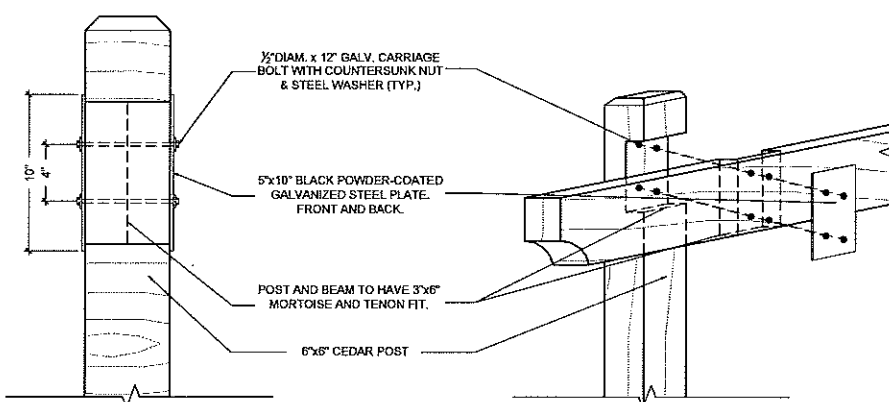
4 MAIN ENTRY SIGN: COLUMN SECTION
SCALE: 1/2"=1'



6 BEAM TO COLUMN CONNECTION
SCALE: 1"=1'



5 PLAYGROUND ENTRY SIGN
SCALE: 1/2"=1'



7 POST TO BEAM CONNECTION
SCALE: 1"=1'

REVISED AS SHOWN FOR USE AT OAK GROVE ENTRANCE
MARCH 1, 2023

Gates, Leighton & Associates, Inc.
LANDSCAPE ARCHITECTURE
860-A Waterman Avenue, East Providence, Rhode Island 02914
Phone: (401) 438-2201 Fax: (401) 438-2511 Website: www.gla.com

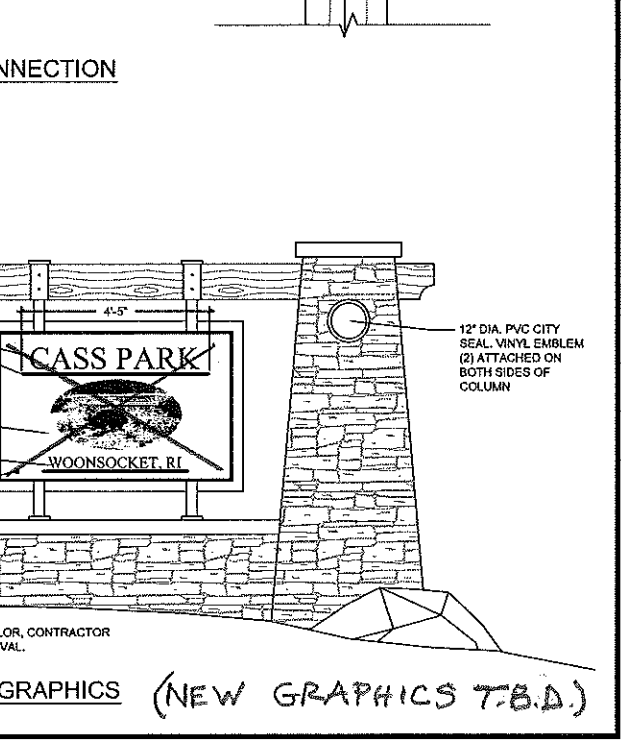
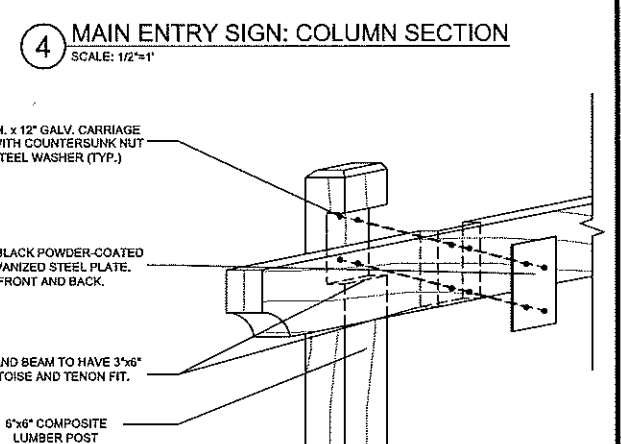
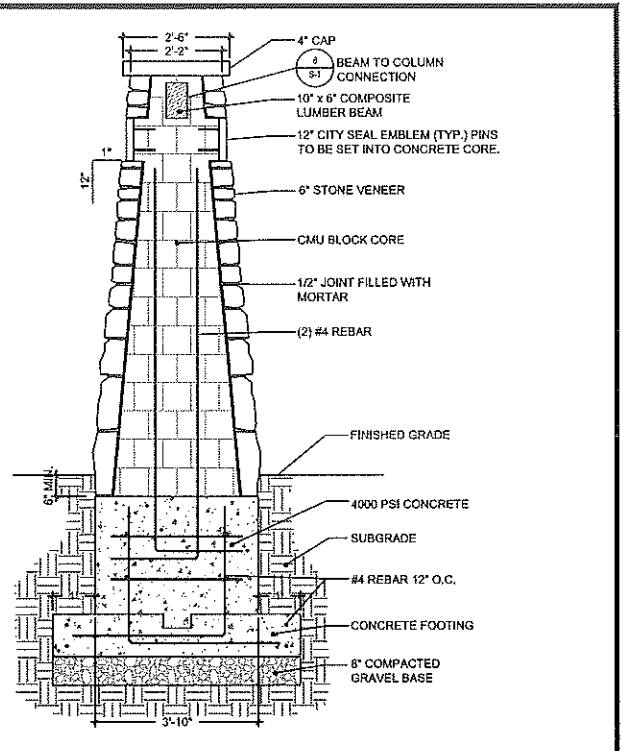
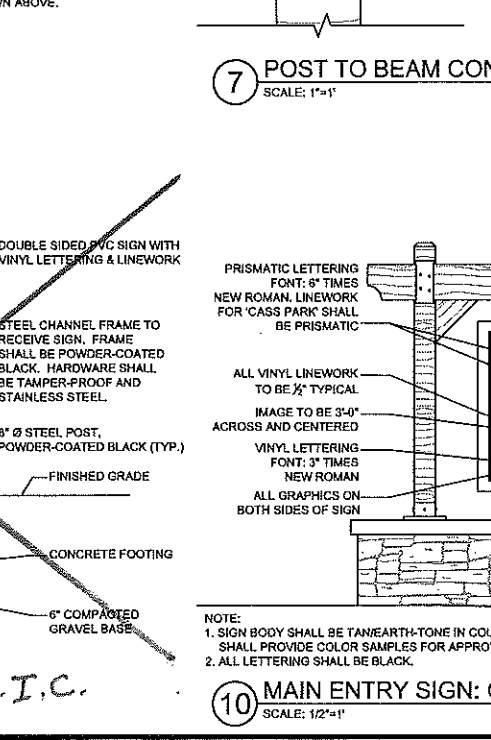
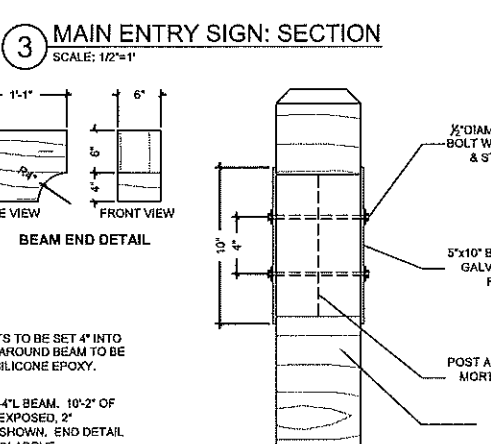
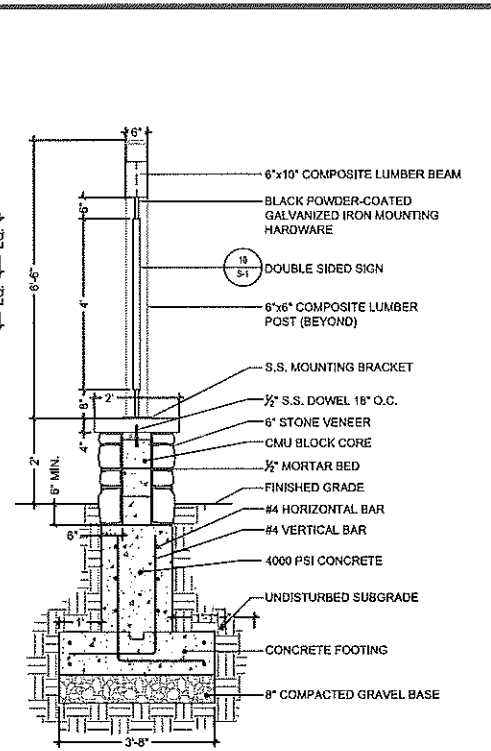
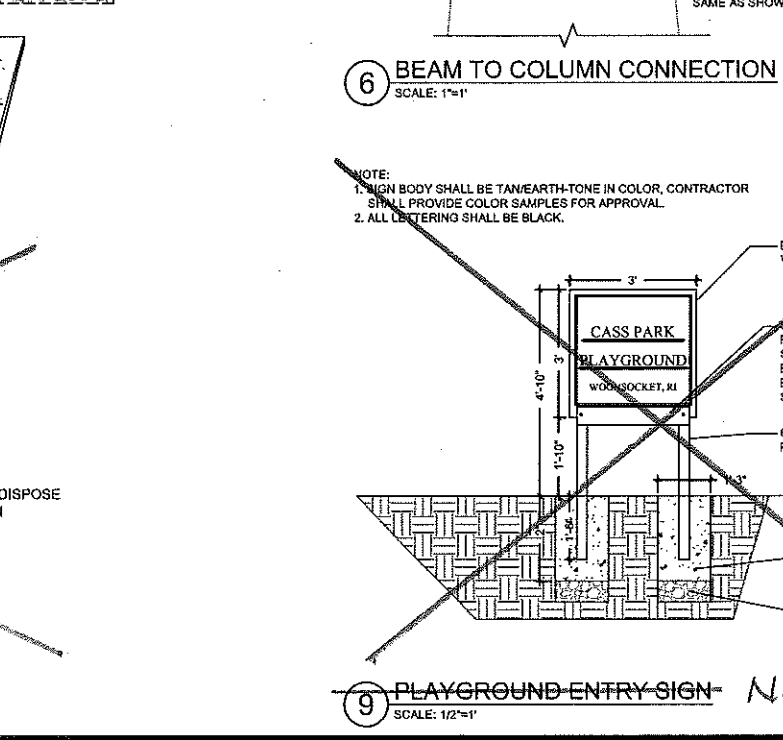
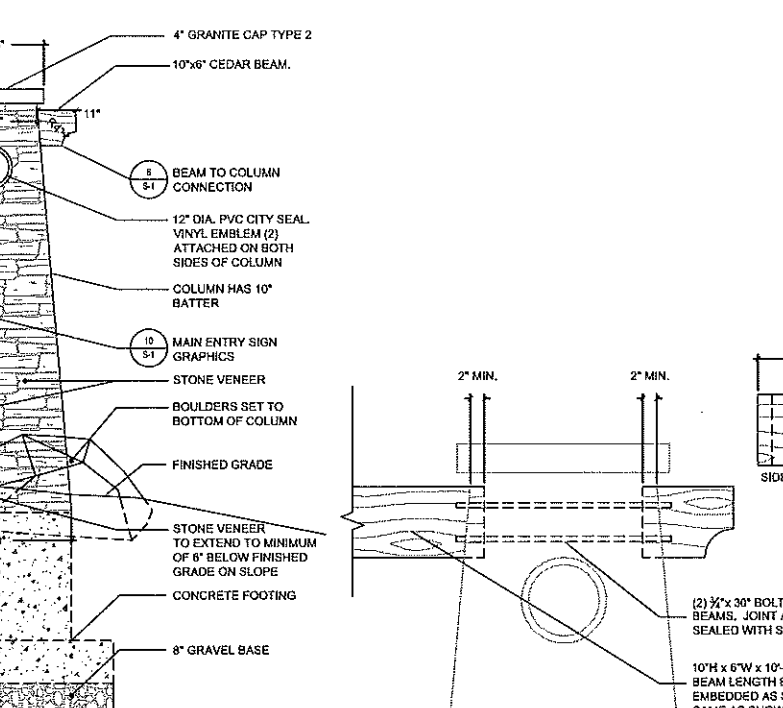
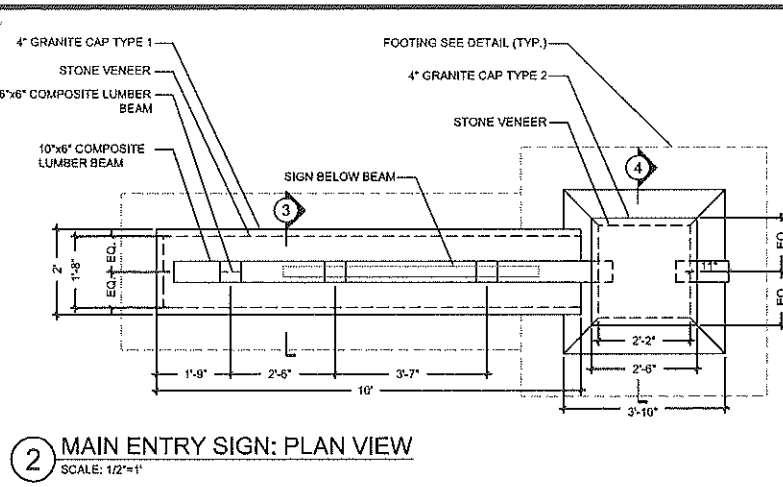
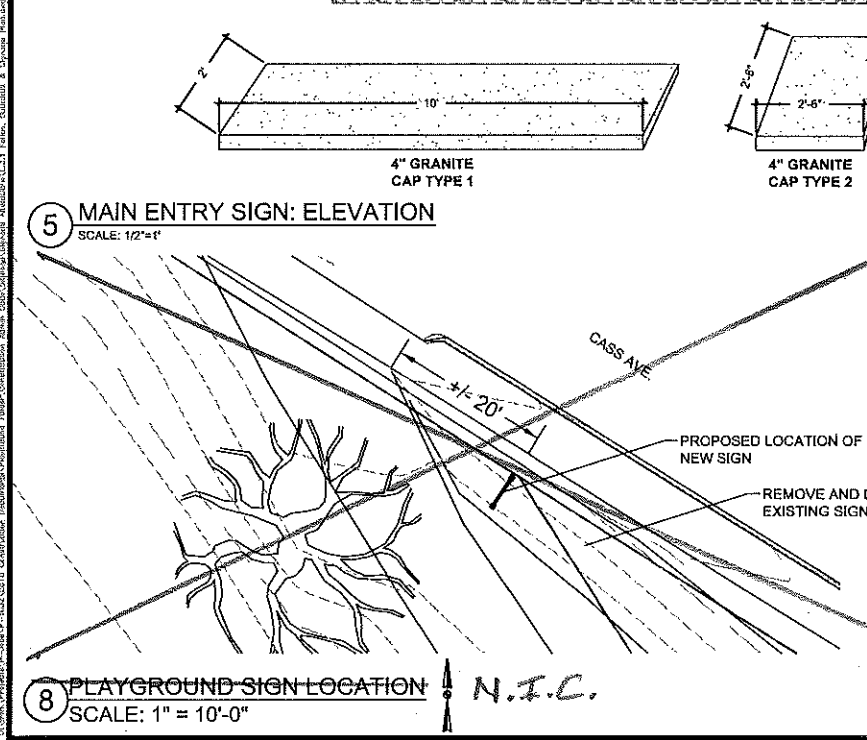
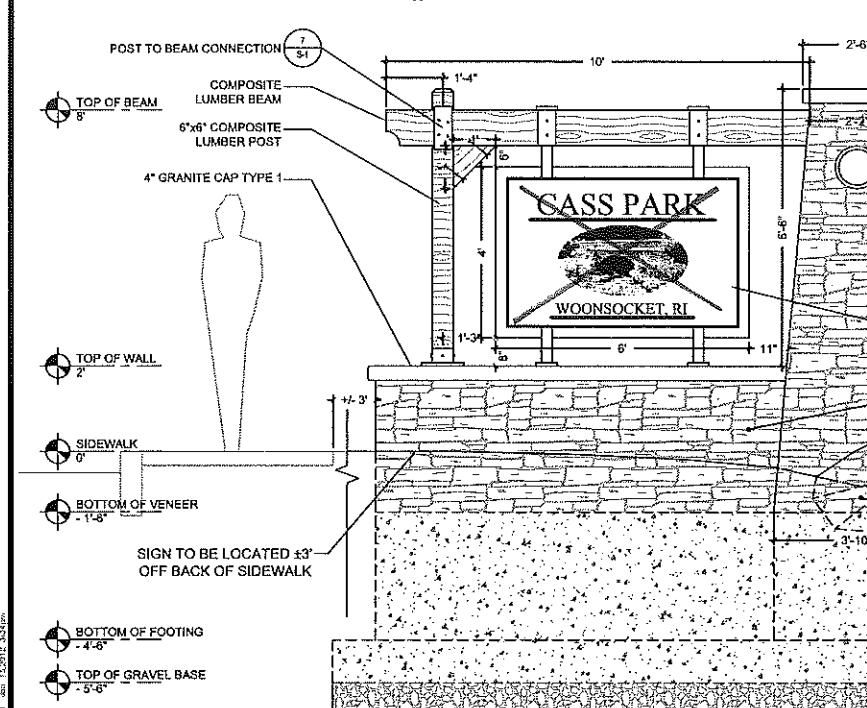
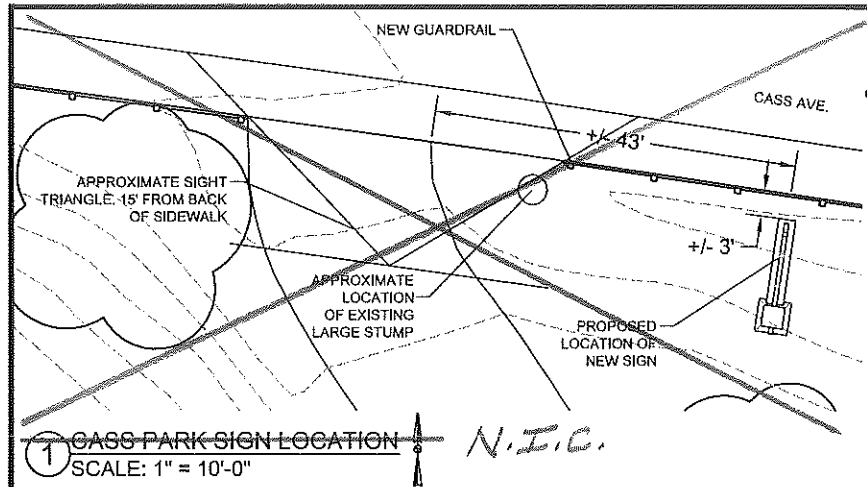
Site Details
Cass Park: Playground & Fencing
CASS AVENUE
WOONSOCKET, RI

Construction Documents

THIS DRAWING IS THE PROPERTY OF THE LANDSCAPE ARCHITECT. ANY UNAUTHORIZED USE OF THIS DRAWING WITHOUT WRITTEN PERMISSION IS PROHIBITED.

Sheet 12 of 13

L-4.3



GLA Gates, Leighton & Associates, Inc.
LANDSCAPE ARCHITECTURE
88-4 Woonsocket Avenue, East Providence, Rhode Island 02914
Phone: (401) 488-8071 Fax: (401) 488-7511 Email: gla@glanet.com

Signage Plans & Details
Cass Park: Playground & Fencing
CASS AVENUE
WOONSOCKET, RI

Design Development

Sheet S of 13
S-1